

(1) FIG. NO.	(2) ITEM NO.	(3) SMR CODE	(4) NATIONAL STOCK NUMBER	(5) PART NUMBER	(6) FSCM	(7) DESCRIPTION	(8) U/M	(9) INC IN UNIT
-----------------	-----------------	-----------------	------------------------------	--------------------	-------------	--------------------	------------	--------------------

0306-TANKS, LINES, FITTINGS, HEADERS (CONT'D)

18	3	PAOZZ	2910-00-459-8447	96906	MS53075-1	CAP FUEL TANK AB,AC	EA	1
18	4	PAOZZ	5330-00-684-7851	96906	MS35643-1	GASKET AB,AC	EA	1
18	5	PAOZZ	2910-00-893-2592	96906	MS35644-1	SLEEVE: FUEL TANK FILLER AB,AC	EA	1
18	6	PAOZZ	5305-00-453-9355	19207	11609358-2	SCREW, MACHINE AB,AC	EA	12
18	7	PAOZZ	2910-01-286-7755	19207	12368371	TERMINAL ASSEMBLY AB,AC	EA	1
18	8	PAOZZ	2910-00-148-1612	19207	10947344	PUMP, SUBMERGED AB,AC	EA	1
18	9	PAOZZ	5330-00-269-3464	19207	10917063	GASKET AB,AC	EA	1
18	10	PAOZZ	4730-00-011-2578	21450	112578	PLUG, PIPE AB,AC	EA	1
18	11	PAOZZ	5305-00-104-8895	19207	11609358-1	SCREW, MACHINE: SENDING UNIT FUEL QUANTITY AB,AC	EA	5
18	12	PAOZZ	6680-00-807-0863	96906	MS500040-5	TRANSMITTER: LIQUID QUANTITY, FUEL TANK (M35A1, M35A2, M35A2C, M36A1, M36A2, M36A2C, M44A1, M44A2, M45A1, M45A2, M45A2G, M46A1, M46A1C, M46A2, M46A2C, M49A1C, M49A2C, M50A1, M50A2, M109A2, M109A3, M185A2, M185A3, M292A1, M292A2, M292A4, M292A5)	EA	1
18	13	PAOZZ	5330-00-753-9072	19207	7539072	GASKET: SENDING UNIT FUEL QUANTITY (M35A1, M35A2, M35A2C, M36A1, M36A2, M36A2C, M44A1, M44A2, M45A1, M45A2, M45A2G, M46A1, M46A1C, M46A2, M46A2C, M49A1C, M49A2C, M50A1, M50A2, M109A2, M109A3, M185A2, M185A3, M292A1, M292A2, M292A4, M292A5)	EA	1
18	14	PAOFF	2910-00-492-6062	19207	11609893	TANK, FUEL AB,AC	EA	1
18	15	PBOZZ	5920-00-855-4260	81349	MILF15160-20	FUSE: AUTOMOTIVE, 2-AMPERE (M275A1, M275A2, M342A2)	EA	1
19	1	PAOZZ	5310-00-950-0039	96906	MS21044N6	NUT, SELF-LOCKING (M47, M48, M59, M275, M342)	EA	2
19	2	PAOZZ	5305-00-269-2811	96906	MS90726-67	SCREW, CAP, HEXAGON HEAD (M47, M48, M59, M275, M342)	EA	3
19	3	PAOZZ	5310-00-088-0553	96906	MS21044N5	NUT, SELF-LOCKING (M47, M48, M59, M275, M342)	EA	4
19	4	PAOZZ	5306-00-225-9097	96906	MS90726-42	BOLT, MACHINE (M47, M48, M59, M275, M342)	EA	6



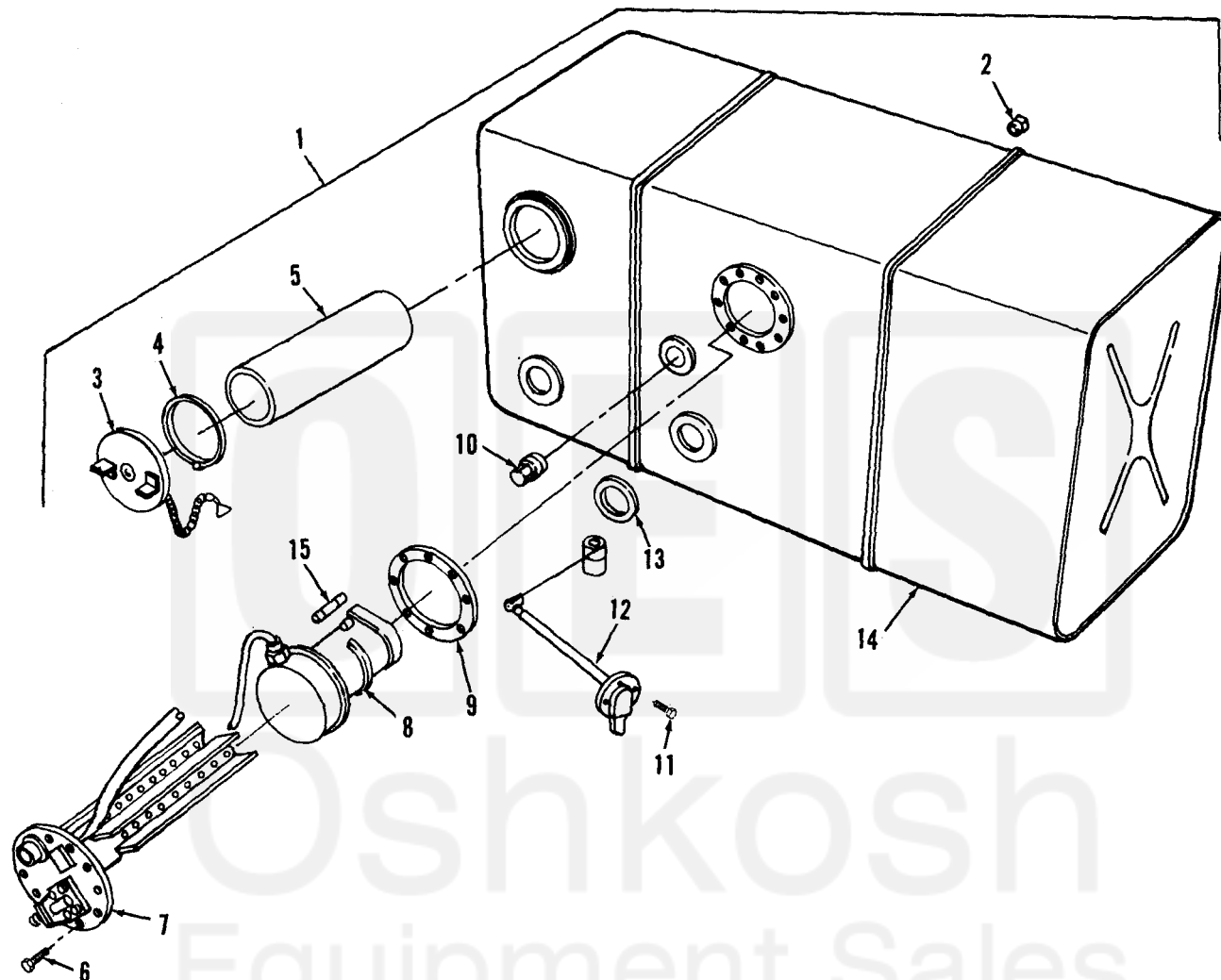


Figure 18. Fuel tank assembly and related parts (multifuel).

☆ U.S. GOVERNMENT PRINTING OFFICE: 1990 743-015/00060